

AuthenTec EntréPad 2501B

World's Most Proven, Secure Slide Sensor
for the PC Market



The EntréPad 2501B is the industry's most proven and flexible slide sensor – combining advanced security and touch-powered features in a solution that is used in more than 1 million biometric notebooks, tablets, desktops and PC peripherals worldwide.

The popular sensor features an integrated Universal Serial Bus and wide pixel array, enabling manufacturers to use the sensor with both AuthenTec's TrueMatch and other third-party fingerprint matchers.

The **EntréPad 2501B** also includes AuthenTec's unique Power of Touch, allowing PC manufacturers to easily and cost-effectively add other convenience, navigation and personalization functions that are controlled by the simple swipe of your finger. With the Power of Touch, the same sensor allows manufacturers to add fast user switching, quick applications access, touch-controlled menu scrolling, and other features that differentiate the PC and improve the user experience.

KEY FEATURES AND BENEFITS

SUPERIOR TECHNOLOGY

- TruePrint technology provides the most accurate fingerprint image
- TrueMatch pattern matching technology runs on high-performing host processor

TRUSTED SECURITY

- Pattern matching technology delivers the industry's best enroll, verify and reject performance (false accept/false reject)
- Hardware-based solution leverages host TPM to securely "lock" biometric data to your PC
- Eliminates need for password backup. Sensor can be used even at BIOS time
- Pre-Boot Authentication, using powerful matching algorithms

USER UPGRADEABLE

- Users can easily upgrade matcher to latest version
- Protects users from future sensor attacks

EASY TO USE

- Able to read virtually every fingerprint
- Fast swipe speed
- BIOS features single swipe to the desktop

LOW POWER

- USB low power device supports selected suspend, extending battery life

DURABILITY

- Ultra hard surface coating withstands greater than 10 million rubs

ROBUST APPLICATION SOFTWARE FEATURE SET

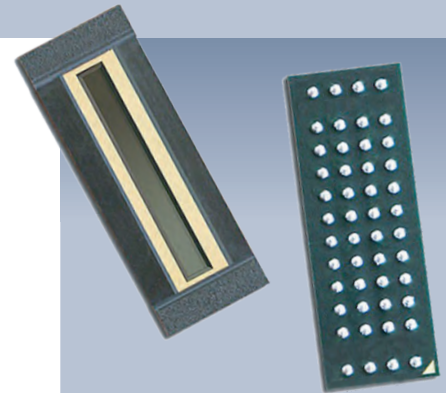
- Supports multi-factor authentication -- combining the sensor with smartcards, TPMs, etc.
- Login and password replacement
- File/folder encryption, secure email, password replacement, and secure file sharing

THE POWER OF TOUCH

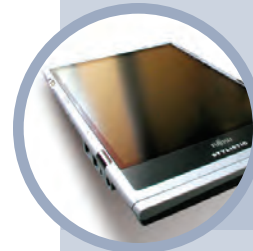
- Enables unique touch powered features
- 3-way scroll wheel emulation; quick application launch; fast user switching, etc.

LOW SOLUTION COST

- Highly integrated sensors
- Minimal bill of materials



LAPTOPS



TABLETS



DESKTOPS



PERIPHERALS

The Power of Touch

AuthenTec EntréPad 2501B

THE AUTHENTEC DIFFERENCE

SUPERIOR TRUEPRINT AND TRUEMATCH TECHNOLOGIES

The EntréPad 2501B employs AuthenTec's award winning TruePrint® and TrueMatch technologies, the most accurate sensor and pattern matching technologies in the industry. These combined technologies capture the highest quality fingerprint images – resulting in significantly better performance than any other solution on the market today.

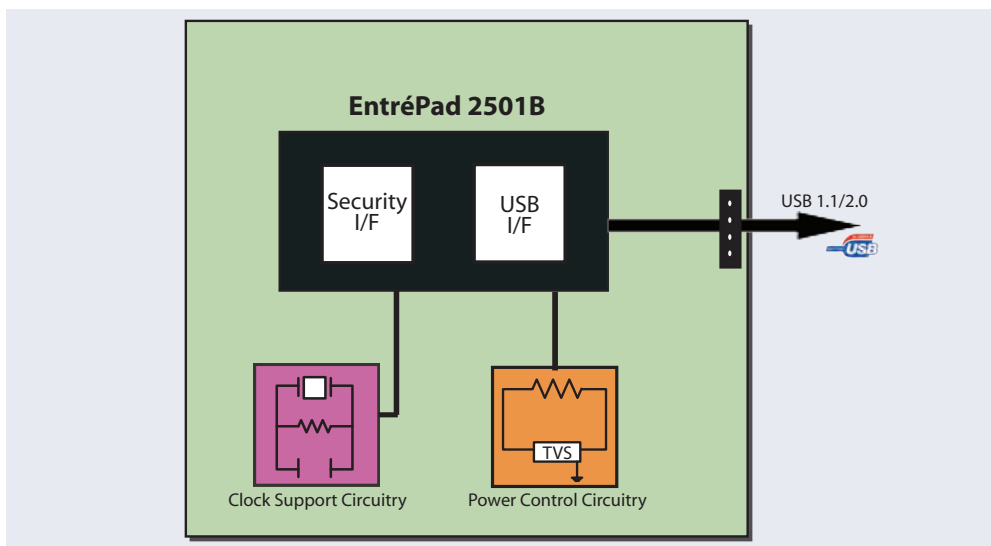
THE POWER OF TOUCH

AuthenTec's unique Power of Touch approach combines the most advanced security, with additional convenience, navigation and personalization functions controlled by the simple swipe of your finger. The Power of Touch enables PC manufacturers to easily and cost-effectively add capabilities such as data protection, password replacement, finger-control scrolling, quick applications access, fast user switching and other functions.

EntréPad 2501B SPECIFICATIONS

High Performance Features	Advanced security Integrated USB interface AuthenTec or third-party matchers Scroll-wheel navigation
Small Form Factor	48 Ball Grid Array (BGA) 13.8mm x 5 mm x 1.3mm
Robust Packaging	Scratch and impact resistant Ultra hard surface coating withstands greater than 10 million rubs
Detection Matrix	RoHS compliant / Lead free 192 x 16 pixels @ 500 ppi 9.75mm x .081mm array size
Universal Serial Bus Interface	USB 1.1/2.0 full speed
Operating Voltage Range	3.0V-3.6V
Commercial Temperature Range	0C to +70C
Current Consumption @ 3.3V	Low power USB device 50mA Imaging 25mA in scroll wheel mode 395uA in selective suspend
ESD Resistance	IEC 61000-4-2 Level 4 (+/- 15KV)
Supported Operating Systems	Microsoft Windows Vista and XP Linux

EntréPad 2501B INTEGRATED FINGERPRINT MODULE



THE AUTHENTEC TOTAL SOLUTION

AuthenTec offers the most complete and flexible solution to enable manufacturers to design in advanced biometric fingerprint sensors. Our total solution approach includes a complete family of sensors; hardware and software kits for easy evaluation and integration; proven solutions from more than 50 hardware, software and design partners; and end-to-end integration support from an experienced technical staff.

CONTACT US

NORTH AMERICA
AuthenTec | U.S. Headquarters
709 South Harbor City Blvd.
Melbourne, FL 32901 USA
phone: 321-308-1300

San Jose, CA
phone: 408-879-2383

EUROPE
Germany | Munich
phone: 49 (8444) 918290

ASIA
China | Asia Headquarters
4000 Wen Xiang Road
Songjiang Shanghai 201616
phone: 86-21-5776-3300

Japan | Tokyo
phone: 81-80-5026-9710

Taiwan | Taipei
phone: 886-2-8758 2719

Korea | Seoul
phone: 82-11-380-6164

WORLDWIDE REPRESENTATIVES NETWORK
A complete listing of AuthenTec's network of representatives is available at our web site.

www.authentec.com

